

School Nursing Offer to Schools & Education Settings

Welcome back to the start of a new academic year

Autumn Term Liaison Meetings

School Nursing locality teams will be contacting each school at the beginning of the term to arrange a meeting with the named link person which is normally the SENCo, a pastoral lead or deputy head. The benefit of a link person is to promote clear communication between the School and the School Nursing service. The autumn term meetings are an exciting and important forum to discuss the School Nurse provision and plan for the year ahead.

The service is aligned with the Family hub localities and each locality has a link to a team of School Nursing staff lead by a Specialist Community Public Health Nurse. This team will provide a named School Nurse to support your school and deliver agreed interventions.

Online support for you and your family

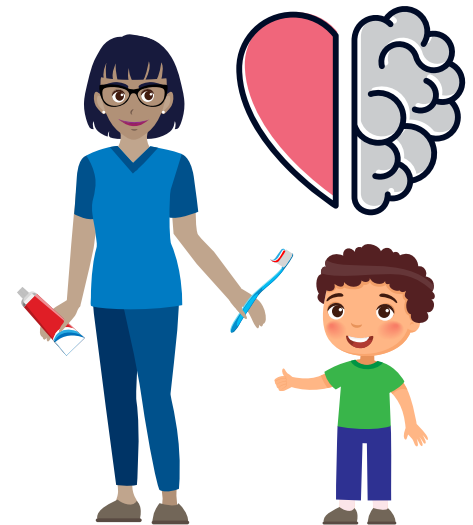
Health for Kids

www.healthforkids.co.uk
Games and activities for children and pages for parent / carers.



Health for Teens

www.healthforteens.co.uk
Blogs and information for young people.



Single Point of Access (SPA)

It is important that professionals, parents/ carers and young people have easy access to a School Nurse. The SPA provides access to a qualified Nurse who can provide advice about health and wellbeing issues & information about our service offer. Parents / carers can call or text for confidential advice and support.

Contact us

Tel:

01922 423349

Email:

bcicb.walsallhcp0-19.spa@nhs.net

Website:

www.walsallhealthcare.nhs.uk/ourservices/school-nursing/parents-andcarers



Parent ChatHealth text:

07520 634 909

Teen ChatHealth text:

07480 635 363