



well wishers

Raising funds to make a difference



Walsall Healthcare
NHS Trust

Annual Report 21/22



www.walsallhealthcare.nhs.uk/charity



@WellWishersWHC



Events

Legacies

Fundraise

Donate

Support

To deliver exceptional care together to improve
the health and wellbeing of our communities



Respect
Compassion
Professionalism
Teamwork

Contents

Message from our Charitable Funds Committee Chair	4
Message from our Fundraising Manager	5
Looking back over the year	6
A place to reflect and remember	6
Special Scholarship for Sheila	7
Keeping Captain Tom’s legacy alive	8
Supporting bereaved families	9
Fundraising Hub opens	9
Ian’s 26-mile thank you	10
Cheers to NHS Big Tea	10
Helping patients tune in	11
Welcoming our new nurses	11

How Well Wishers has made a difference 12

Showing support for Ukraine 12

Serenity room at Hollybank House 12

New toys just the tonic 13

Making a family's Eid memories 14

Early Christmas for dying mum Dawn 14

A look ahead to 2023 15

Financial Reports 16

Meet the Trustees 34

Message from our Charitable Funds Committee Chair

As we all know, the ongoing Covid-19 pandemic continued to impact Walsall Healthcare NHS Trust plans but the Charitable Funds Committee pressed ahead to make plans for the year. We focused on how we were going to further raise the profile of our Well Wishers charity and build on the relationships made in the community through its support to staff.

No matter what the size of the charity, the last 12 or so months have been tough for all. But when your charity is so dependent on public support and the involvement of colleagues these challenges are all the more difficult.

It's credit to Well Wishers that it found a way to keep going throughout the pandemic. It has worked differently and explored a host of ways to continue its ethos of enhancing our patients' experience to make a difference to those who have continued to use our services throughout this period. There are so many things we can be proud of in the face of such adversity - not least the amazing work the Fundraising Team has carried out.

In the same way as Walsall Healthcare NHS Trust as an organisation has had to make plans to recover, so has the charity as it embarks on, hopefully, a

more stable year than 2020.

I would like to thank everyone who has supported Well Wishers; we couldn't do what we do without you. And I sincerely hope that the next 12 months will give us the opportunity to continue our fundraising as we need you now more than ever.

A handwritten signature in blue ink, appearing to read 'P. Assinder'.

Paul Assinder

Charitable Funds, Committee Chair

"I would like to thank everyone who has supported Well Wishers; we couldn't do what we do without you."



Message from our Fundraising Manager

At the start of 2021 Well Wishers had once again organised a packed year of fundraising events, including our annual boxing match – a firm favourite among supporters - and a ten-mile seaside walk, rounded off by the usual busy Christmas programme.

A number of these had to be cancelled due to the pandemic but the relationships the charity built with the local community and businesses were invaluable during this time and helped us prepare for the future.

We did manage a couple of events, one being Ian's Walk, a 26-mile route along the Walsall canal path, led by a grateful COVID-19 survivor. And staff really enjoyed our annual quiz night, not just because of raising funds but being together with colleagues from across the Trust. Trust's Got Talent and our Boxing event, had to be cancelled at short notice.

We were excited when our Fundraising Hub was able to open in its new location in the main atrium of Walsall Manor Hospital and, although quiet to start with and strict social distancing rules it felt like we were heading towards some sort of normality. We were getting back to what the charity does best; raising funds to enhance the experience of patients in our care with the added element of supporting the health and wellbeing of our staff.

In the early part of 2021 we continued to be humbled by the support for Walsall Manor Hospital and its community services - particularly for ICU where staff were still caring for a high number of patients with COVID-19. Snacks, drinks, cards and messages continued to flood in and this community kindness was very much appreciated at a tough time.

We are still proud of our fantastic achievements against this testing backdrop which can be read about in more detail in this Annual Report.

And what will the next 12 months bring? We hope that the easing of restrictions will mean we are able to bring back some, if not all, of our activities.

Thank you to everyone who supports the charity - those people who have become friends and the "go to" people who help us to make so many good things happen. We're excited to work with you all again and look forward to welcoming new supporters for new charity ventures.



Georgie Westley
Fundraising Manager



OUR VISION

To raise money for things over and above what the NHS is able to provide.



OUR MISSION

To provide the best experience possible for patients, service users and families.

Looking back over the year

Despite the uncertainty and difficulty of a fundraising year that ran through the continuing COVID-19 pandemic, the opportunity to take stock and reflect on the charity's achievements is a welcome one.

It is to Well Wishers' credit that, after an initial period of being unsure as to how the charity could function in such challenging circumstances, it was able to adapt and carve out a different role that was just as vital to so many people.

Well Wishers became the "go to" link between the community, the hospital and its community services. So many people wanted to support the NHS and let staff and patients know they were there for them – even when they weren't able to physically see them due to ongoing infection prevention measures.

During this time there were some memorable and special moments that saw the charity become an invaluable asset to Walsall Healthcare's patients and staff alike. Here are some of the highlights from that time.

A place to reflect and remember

A special garden for reflection and remembrance was created outside Walsall Manor Hospital for staff who have lost colleagues and loved ones during the pandemic.

It was installed thanks to the Well Wishers COVID-19 Fund that was set up by Walsall Healthcare NHS Trust's charity and support from Walsall Hospitals Company Plc. As well as two arches and benches it features an area that houses hand painted stones that represent remembrance, reflection or positivity.

Colleagues from IT came to look at the garden, remembering their colleague Richard Corbett, Infrastructure Support Manager, who sadly lost his battle with COVID-19 after being cared for in ICU.

The area has been created near to the hospital's main entrance.



Staff told us that they want somewhere they can go to sit and remember colleagues, friends and family they have lost, or to reflect on the experiences they have had during the pandemic and that they wanted an area that the public could also see, to acknowledge that this is important to our organisation.

We were able to use the donations made by the public to our COVID-19 fund along with a huge donation from the Guru Nanak Gurdwara Sahib and funding from Walsall Hospitals Company PLC to create this garden. A plaque, supplied by Skanska, explaining what it symbolises, was also installed.

Special Scholarship for Sheila

A mother-of-three and former colleague of much-loved Walsall Staff Nurse Areema Nasreen, who died after contracting COVID-19, vowed to “make her proud” after being awarded the first Scholarship in her memory.

Sheila Kerai, a Clinical Support Worker on the Acute Medical Unit at Walsall Manor Hospital, worked alongside Areema.

“We were like chalk and cheese in that I am quite a boisterous person and Areema was quieter and more reserved but we clicked so well and rubbed off on each other,” explained Sheila.

“We both dreamed of becoming nurses and when I encouraged Areema to start her journey she did the same to me but the timing wasn’t right for me. I was a single mum with three children and they needed me, particularly my youngest. But thanks to this Scholarship in Areema’s memory it’s my time now and I promise I’ll make her proud.”

Walsall Healthcare NHS Trust wanted to honour the memory of Areema by helping someone else to achieve their healthcare career goal. The trust’s Professional Development Unit, HR and Well Wishers charity worked together to establish a Scholarship in Areema’s name to financially benefit someone who needs a little extra help to achieve their dream. It is partly funded by the charity and was developed after talking to staff about the most fitting way to remember Areema.

To ensure the Scholarship was tailored to best suit Sheila, she started as a Trainee Nursing Associate and will be eligible to step on to year two of the nursing degree programme once that two year training programme has finished.

Sheila said: “I am really grateful for this opportunity. I will still get my BSc in Nursing but it will take me four years to complete instead of three and my colleagues say they’ll support me all the way which is great.

“Every time I start my shift on AMU I greet Areema by talking to the plaque we have put on the wall in her memory and I like to think she’s looking down on me, willing me on.”



Keeping Captain Tom's legacy alive

When London Marathon Events launched the Captain Tom 100 – a challenge based around the number 100 to honour the late fundraiser's milestone birthday – Well Wishers urged people to do their bit too.

The Fundraising Team set up a Well Wishers walk for staff to complete around the hospital and community sites.

Sixty seven colleagues including staff from Imaging, ICU and SPAR participated in the walk.

Staff at Blakenall Village Centre and Walsall Palliative Care Centre also took part by walking around their own building.

Thanks to Captain Sir Tom Moore Well Wishers has been able to fund the following:

- 1. Wheelchairs** – The first sum to benefit the Trust was used to purchase 20 much-needed wheelchairs for the main atrium. So many staff and volunteers have been in the unfortunate situation of trying to locate a wheelchair for poorly patients, or someone struggling with mobility issues and we know this causes great anxiety to all. These wheelchairs have helped greatly to resolve this issue and now both staff and patients feel more confident knowing these are easily accessible.
- 2. Fundraising Hub** – The second sum will be used to refurbish the Fundraising Hub in the main atrium which is a real boost for Well Wishers as this area has finally given the charity a home and a proper base for all of its work. Prior to the pandemic, Well Wishers was generating funds of

around £4,000 each month through book sales and events – and teams across the hospital and community have been able to use this money for the benefit of patients and their families.

- 3. Chapel refurbishment** – A third and final bid will be used to refurbish our Chapel. The bid requested that the funding was used for a multi-cultural project that benefited patients, visitors, staff and volunteers.

- 4. BCWB STP** – Walsall Healthcare, through Well Wishers, was successful in a joint bid with Black Country & West Birmingham Sustainability Transformation Partnership and money received is being used to tackle health inequalities with Walsall Together taking the lead on this borough-wide work.



“These wheelchairs have helped greatly to resolve this issue and now both staff and patients feel more confident knowing these are easily accessible.”

Supporting bereaved families

Well Wishers has produced special bereavement cards following a suggestion from Ward 17 Sister Michelle Williams.

Michelle said: "I thought a card would be an appropriate gesture for our staff who do want to let families or friends know how sorry they are if they have been caring for a patient who sadly dies.

"Once again our Well Wishers charity has been able to take this on board and develop bereavement cards that all the wards across the hospital can use. It's important to staff to be able to pass on their condolences in this way and also something quite personal that can be read at a later date."

Created by Walsall Healthcare's Graphic Designer Manoj Lakha, the cards feature the well-known and much-loved tree of life dedicated to Walsall's former Director of Public Health Dr Sam Ramaiah that stands in the gardens of Walsall Palliative Care Centre.



Fundraising Hub opens

Well Wishers' former home was in the Purple Hub in the outpatients corridor at the Manor Hospital.

it was the end of an impressive era for everyone who worked there, including Patient Experience and Volunteering, when they closed the door to enable the Purple Hub office space to be converted into a Pharmacy.

Fundraising moved into the main atrium to the right of Taste Café into the former ambulance bay in December 2020, but had to close for a while to allow the smooth running of the vaccination hub. It re-opened in spring 2021.

The Well Wishers Fundraising Hub is being fitted out as a shop with an area for businesses that support the charity.



Staff pop in to discuss fundraising, events and how Well Wishers can benefit their area of work. And supporters have been regular visitors bringing donations.



Ian's 26-mile thank you

Grateful former patient Ian Hawkins, a COVID-19 survivor, worked with Well Wishers and set himself a £10,000 fundraising challenge as his way of saying thank you to the team for getting him back on his feet and able to enjoy life at home.

Ian, his family, friends, staff from Walsall Healthcare NHS Trust and fellow fundraisers all took part in a 26-mile walk along the canal network from Walsall Manor Hospital to Chasewater and back, to raise money for the team to enhance its support to all long term patients who have spent time in critical care.

Father-of-two Ian said: "I left hospital in June 2020 after being admitted in March but that was just one step on the road to my recovery – it's the work that goes on afterwards with the rehabilitation team that I'm sure many people don't realise is just as vital as the work that has gone into helping you survive critical care. The physical interventions and support, along with the emotional and psychological input, can't be under-estimated."

Xana Marriott, Senior Sister for Critical Care Rehabilitation, who was among those who took part in the walk, said: "It was amazing to see Ian walk all that way knowing that he was pushing himself to walk to the kitchen and upstairs when he first came out of hospital.

"The equipment we use in rehabilitation such as arm and leg bikes, or trainers, make such a difference. It's hard to fully appreciate the effects that a significant period in critical care can have upon a patient and rehabilitation is a massive team effort using every approach we possibly can to get them back to the quality of life that is most important to them."

Cheers to NHS Big Tea

Well Wishers really got the par-TEA started as part of #NHSBigTea and the 73rd birthday of the NHS. The charity organised Walsall Healthcare NHS Trust's own tea party at the hospital to thank staff for all they have done and give them a well-earned break.

A tea-riffic display was set up in the main atrium of the hospital thanks to the following: balloon display (@theballoonstory_), samosas (Vibrant Networks), cakes (kindly baked by Trust staff), tea and coffee (The Muslim Association and Elior) and sweet treats (Morrisons in Walsall, Tesco Walsall Extra and Spar at the Manor Hospital).



Helping patients tune in

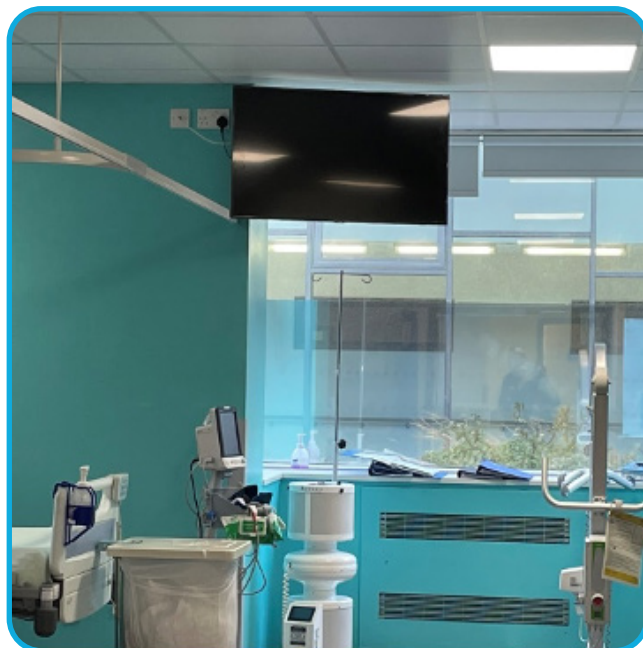
Patients can tune into their favourite soaps, quiz shows or documentaries thanks to a host of new televisions funded by Well Wishers.

The charity bought TVs for the bays in Wards 9 and 10 at Walsall Manor Hospital thanks to generous donations.

These wards have also been refurbished to improve patient and staff experience.

These simple home comforts can have a significant impact on a patient's wellbeing, pain management and recovery rate.

They are also boredom busters at a time when patients are away from their friends and family for long periods and are without the distractions of their regular routines.



Divisional Director of Estates and Facilities at Walsall Healthcare NHS Trust, Jane Longden, said: "It's been amazing to have this support from Well Wishers for TVs to go inside our newly refurbished wards. This is a great option to increase patient satisfaction whilst receiving treatment with us."

Welcoming our new nurses

Walsall Healthcare's international nurses were able to attend a welcome event hosted by its BAME Shared Decision Making Council and Well Wishers charity.

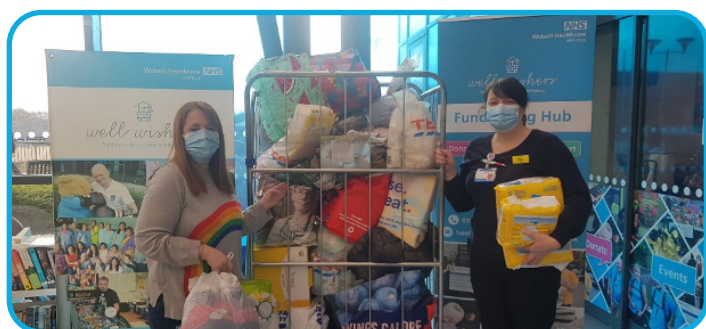
The event saw the launch of a new buddy scheme whereby existing clinical and non-clinical staff can step up to support some of the nurses taking up roles at Walsall Manor Hospital.

Group Chief Executive Professor David Loughton CBE, Director of Nursing Lisa Carroll and Chief People Officer Catherine Griffiths attended and supported BAME Council Chair Joan Dyer in giving nurses introductions and explaining how the buddy scheme would work.

All buddy volunteers and international nurses then interacted with each other and swapped their details. The buddies offered support, advice or even just the chance to chat.



How Well Wishers has made a difference



Showing support for Ukraine

Kind-hearted staff from the Trust and the community provided an 'overwhelming response' to an appeal for the people in Ukraine by donating hundreds of items.

Donations filled more than three tall cages with tinned items, toiletries, baby wear and sanitary items bound for victims of the Russian invasion.

Television footage of the atrocities in Ukraine and the suffering of their people really struck a chord with staff.

Matron for Maternity and Outpatients Laura Parsons and midwife Gemma Stanton delivered one cage full of items from their department to be shipped out.

Laura said: "We know how tough the job is, so seeing some of the shocking pictures of maternity wards in basements knowing people are trying to provide care in a war-torn country has really made people want to give whatever they can."

"It's been a quick turnaround and we have been overwhelmed by the number of donations from fellow midwives, support workers and ward clerks, and a school, St Mary's of the Angels Primary School in Aldridge."

Well Wishers also supported an appeal in the community set up by Dixon & Sons Construction Ltd with collection points in areas where its employees live, Walsall being one.

The firm was inundated with support with items being taken on a large shipment to Ukraine.

Serenity room at Hollybank House

A serenity room has been created at Hollybank House for staff to take some time out when needed and relax in a calm environment.

Well Wishers supported the serenity room with milk, tea, coffee, biscuits and lots more following a kind donation from local business Vibrant Network.

When the Fundraising Team visited Hollybank House it became apparent that colleagues would benefit further from a comfortable sofa both in their serenity room and staff room.

Well Wishers came to the rescue and with funds raised through the fundraising hub purchased one sofa for each room.

The team is so pleased that staff now have somewhere to take a moment to sit and relax whilst on their break.



New toys just the tonic

Around £600 worth of equipment and toys was bought for youngsters at Walsall's Child Development Centre (CDC).

Well Wishers funded the new items, which include jigsaws and picture-based toys, for service users at the CDC in Shelfield, near Walsall, as existing items were wearing out.

Around 2,500 children are registered with the service, which deals with around 1,400 referrals a year.

The equipment is mostly for pre-school age (under fives) plus a few items for slightly older children, ranging from those who can't communicate to those who have a limited ability to talk, to those who have not developed a high level of social skills or emotions.

They are used to help children with learning difficulties, as well as those who are deaf, autistic and those struggling with pronunciation or sentence structure.

Head of Speech and Language Therapy at that time, Linda Bromwich said: "Georgie Westley (Fundraising Manager) contacted us asking if there were any bits of equipment we needed, so we put a list together.

"We're very grateful to her and the charity for what they have done because we don't have a great budget for equipment so it's wonderful for the team.

"The CDC together with its sensory room has a brilliant relationship with the charity and benefitted from incredible support.

"A lot of the children we see are quite physical so the toys and equipment take quite a battering and they are very well used, so the chance to replace items was welcome.

"Children have spent a lot of time at home in lockdown and not all of them have a range of toys to play with, so it's really good for them to have the opportunity to play with these.

"Jigsaws help them develop attention and anything picture-based provides triggers. For example, children who can't talk use pictures to help them until their words come, or to show us what they like or don't like for a whole range of age groups and levels of difficulty."



Making a family's Eid memories

A mum receiving end-of-life care was supported by Well Wishers and generous members of the community to celebrate a final Eid with her family.

The patient was being cared for at Goscote Hospice and had three children who would traditionally receive gifts as part of Eid-al-Fitr celebrations which follow the end of the fasting month of Ramadan for Muslims.

Hospice staff contacted Well Wishers' Fundraising Manager Georgie Westley as they wanted to make this time as special as possible for the whole family and the charity has previously helped dying patients to make memories.

Well Wishers funded food and decorations and received support from Morrisons' community champions – Rachel Ward from the Walsall store who donated pyjamas for the children and Laura Andrews from the Willenhall store who handed over a box of toiletries and pyjamas.

Amrik Singh, Director of Vibrant Networks, came along to the charity's Fundraising Hub at Walsall Manor Hospital with his daughter Amanat Jessal and brought gifts including the full set of David Walliams books for the family's eldest daughter.

Mohammed Arif, interim Chair of the United Muslim Organisation, said: "When Georgie contacted me to ask for help to provide gifts for the young children whose mother is in the care of Goscote Hospice we were more than happy to make this as normal an Eid for this family as possible.

"Great support and gifts came from the Specsavers branch in Bloxwich and UKIM Icare at short notice and were greatly appreciated."

On behalf of the hospice, Clinical Sister Bethany Speake was happy to accept the donations and thanked everyone involved for their generosity.



Early Christmas for dying mum Dawn

A mum who was told she only had 'weeks or months' to live was able to celebrate an early Christmas with her family thanks to donations from Walsall's kind-hearted community and help from Well Wishers.

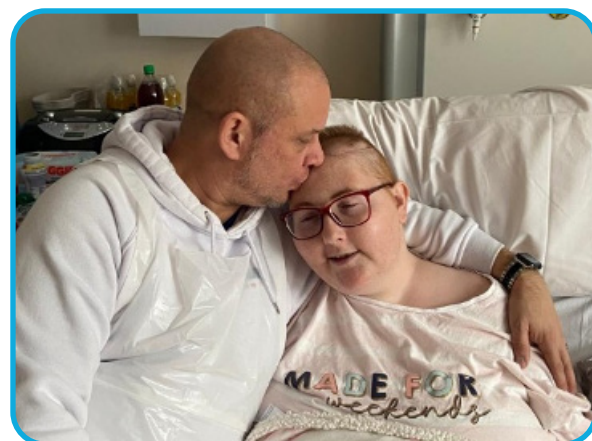
Dawn Wood, 41, from Wednesbury, had a brain tumour and was told she is unlikely to survive much longer.

The community rallied round to support the family in their time of need to provide presents for Dawn and husband Richard's children and a tea party at Goscote Hospice, Walsall.

Well Wishers provided food and Christmas decorations, Asda at St Matthews, Walsall, presented the children with Christmas pyjamas, slipper socks, hot chocolate, and toiletries and IT Consultant Amrik Singh, from Vibrant Networks in Walsall, donated four brightly coloured sit-on bean bags.

"We didn't want to bring Christmas forward because we thought the children might remember it for the wrong reasons," said Richard. "So the children just opened their main Christmas present and they put on the fluffy socks and blankets and sat on the bean bags.

"The hospice and Well Wishers charity were amazing and we're so thankful and grateful to everyone for what they did."



A look ahead

The team has been putting together a calendar of events throughout the year - with the popular boxing event and Trust's Got Talent among a busy 12 months of fundraisers.

Other highlights include a fashion show, monster gaming event, quizzes, a sky dive and a Bongo Bingo evening.

The charity has also been producing regular newsletters to showcase its activity.

And a marketing pack – paused during the pandemic – has been updated. This will give local businesses an opportunity to support Well Wishers in return for a stand at the hospital or in the community to promote their company.

Be sure to follow our progress on our web and social media channels!

  @WellWishersWHC

 www.walsallhealthcare.nhs.uk/charity



Financial Reports

**WALSALL HEALTHCARE NHS TRUST
GENERAL CHARITABLE FUND**

**CHARITY NUMBER 1057416
(Registered in England & Wales)**

**TRUSTEES ANNUAL REPORT
2021/2022**

TRUSTEES INCORPORATED AS A BODY CORPORATE UNDER SECTION 11
OF THE NATIONAL HEALTH SERVICES AND COMMUNITY CARE ACT
1990.

Principal Address
MANOR HOSPITAL
MOAT ROAD
WALSALL
WEST MIDLANDS
WS2 9PS

Bankers
NATIONAL WESTMINSTER BANK
PLC
33 Park Street
Walsall
West Midlands
WS1 1ER

Independent Examiners
Mark Surridge FCCA
MAZARS LLP
Chartered Accountants &
Statutory Auditor
2 Chamberlain Square
Birmingham
West Midlands
B3 3AX

Investment Managers
BREWIN DOLPHIN LIMITED
9 Colmore Row
Birmingham
B3 2BJ

The Walsall Healthcare NHS Trust General Charitable Fund is governed by a model declaration of trust for a NHS charity. The objectives of the charity are for any charitable purpose or purposes relating to the National Health Service wholly or mainly for the service provided by the Walsall Healthcare NHS Trust.

The charity is registered with the Charity Commission who have declared that, under the provisions of section 96 of the Charities Act 2011, the charity and the following charities shall be treated as a single charity for the purposes of Sections 3 and 4 (Registration) of the Charities Act 2011 and for the purposes of Part IV of that Act (Accounting):

1. Corporate including General and Educational Fund
2. Medical Specialties Fund
3. Surgical Specialties Fund
4. Women's Children's and Community Services Fund
5. Specialist Palliative Care Fund

The annual accounts comply with the current statutory requirements as notified by the Charity Commissioners and they are in line with the requirements detailed in the Charities Governing Document and the Statement of Recommended Practice (SORP) Financial Reporting Standard (FRS) 102 effective from the 1st January 2019.

TRUSTEE

The Walsall Healthcare NHS Trust Board as the Corporate Trustee of the Charitable Funds is governed by the law applicable to Trusts, principally the Trustee Act 2000 and also the law applicable to Charities which is governed by the Charities Act 2011.

As Corporate Trustee, the Trust Board is responsible for the overall management of Charitable Funds.

The Trust Board has devolved responsibility for the on-going management of the funds to the Charitable Funds Committee; the Committee membership comprised:

Mr P Assinder	Non-Executive Director
Mrs S Evans	Group Director of Communications and Stakeholder Engagement
Mr R Caldicott	Chief Financial Officer
Mrs J Davies	Director of Corporate Governance & Trust Secretary (until June meeting)
Ms A Riley	Director of Nursing (until June meeting)
Mrs G Augustine	Director of Planning and Improvement (until June meeting)
Mr K Bostock	Group Director of Assurance

Members are appointed to the Charitable Funds Committee by election of the presiding Trust Board members.

The Charitable Funds Committee review financial performance of the investment portfolio, monitor and approve expenditure and the balances held on funds, to ensure the objectives of the Charity are satisfied and ultimately that of the general public.

Reserves Policy

The trustees have established a reserves policy as part of their plans to provide long term support to the Trust for research, education, new equipment, staff and patient benefits and building work.

The trustees intend that funds are spent within a reasonable period of receipt and therefore plan to maintain reserves sufficient to cover future expenditure equivalent to an average of 6 months. The trustees have previously set a contingency reserve total of £500,000 that is periodically reviewed and revised accordingly in relation to the levels of committed expenditure.

Income & Expenditure

During the year the Charity had investment losses totalling £16,000 in the 2021/22 financial year. The net total of donations and income from investments was an increase of £278,000 (including revaluation and disposal of investments) with total expenditure at £168,000.

Donations are received from a wide variety of sources, including bequests. The total value of donations and legacies received in the year was £272,000; many of these were received as a way of expressing gratitude for the care provided to individuals or their relatives.

The Charity benefited from specific external fund raising initiatives i.e. a second grant was received by way of a successful Black Country and West Birmingham STP national bid for £50,000 during the year. The grant is supporting the Charity Committee's nominated "Wellbeing project".

During the financial year £3,241 was also received in relation to the Staff Lottery which is an initiative of the Well Wishers (associated trading name of Walsall Healthcare NHS Trust General Charitable Fund).

The charity ensures that donations received are used in accordance with the wishes of the donor i.e. to purchase medical equipment, provide amenities to patients and staff and finance limited education and medical research.

As an example of the utilisation of the donations during the financial year the following items were purchased:

<input type="checkbox"/>	Walsall Together - Wellbeing project	£50,000
<input type="checkbox"/>	Flat Bed Hoist	£7,965
<input type="checkbox"/>	Long Service Vouchers	£9,614

The Charity has the following commitments for the forthcoming year:

□	Chapel Refurbishment	£50,000
□	Fundraising Hub	£49,500
□	Scholarship	£10,000

Investments are not made in industries whose aims and objectives are contrary to those of the NHS, e.g. Tobacco Industries, Breweries. In 2021/22 the recovery of the investments continued in light of the restructure of the portfolio following the appointment of an alternative investment broker.

The value of the Portfolio has fluctuated considerably in the last few years as a consequence of a reduction in the level of donations, increased levels of expenditure and commitments, and the economic uncertainty created by Brexit and the most recent global pandemic (COVID-19). The investment manager's growth strategy was affected by the significant loss in value of investments during 2019/20 and the Trust's cash requirement to settle creditor commitments.

The Corporate Trustees appointed an alternative investment broker in August 2021 to address the investment exposure risk of the Charity and manage the portfolio of investments for the remainder of 2021/22.

There is an expectation of an upturn in the valuation of the funds as the economic position improves. The Charity is continuing to expand its network and has received national funds during 2021/22 to further sustain the viability of the Charity. The Charity is due to receive a significant legacy during the 2022/23 financial year and the appointment of additional fundraising support in the medium term is expected to improve the levels of income.

All donations will be gratefully received and will be used to enhance services over and above that provided by the NHS for both patients and staff.

They should be sent to:

The General Office
Walsall Healthcare NHS Trust
Manor Hospital
Moat Road
Walsall
WS2 9PS

Donations will be paid into the Walsall Healthcare NHS Trust General Charitable account which is the bank account for the charity.

The following is an extract of the accounts and has been compiled to assist readers in understanding the Charity's financial affairs.

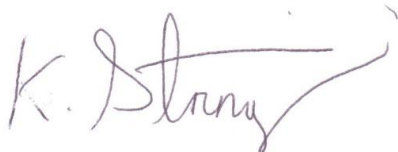
STATEMENT OF FINANCIAL ACTIVITIES FOR YEAR ENDED 31 MARCH 2022

	2021/22	2021/22	2021/22	2020/21
	£000	£000	£000	£000
	Unrestricted	Restricted	Total	Total
Income and Endowments from:				
Donations and legacies	150	122	272	430
Other trading activities	3	-	3	7
Investment Income	13	6	19	6
Other Income	0	0	0	0
Total Income	166	128	294	443
Expenditure on:				
Raising funds	22	10	32	5
Charitable Activities	43	93	136	134
Total Expenditure	65	103	168	265
Net Incoming/(Outgoing) Resources	101	25	126	304
Transfer between funds	0	0	0	0
Gains/(Losses) on revaluation and disposal of investments	(11)	(5)	(16)	256
Net movement in funds	90	20	110	560
Fund balances brought forward at 31 March 2021	556	374	930	370
Fund balances carried forward at 31 March 2022	646	394	1,040	930

BALANCE SHEET AS AT 31 MARCH 2022

	2021/22 £000	2020/21 £000
Fixed Assets:		
Investments	699	631
Total Fixed Assets	699	631
Current Assets:		
Debtors	53	3
Investments	63	142
Cash at bank and in hand	408	300
Total Current Assets	524	445
Liabilities:		
Creditors due within one year	(183)	(146)
Total Net Assets	1,040	930
Total Funds of the Charity		
Restricted income funds	394	374
Unrestricted funds	646	556
	1,040	930

Approved on behalf of the Trustee



MR KEVIN STRINGER
GROUP CHIEF
FINANICAL OFFICER

WALSALL HEALTHCARE NHS TRUST

CHARITABLE TRUST ACCOUNT

2021/2022

Statement of trustees' responsibilities

The trustees are responsible for:

- a. Keeping proper accounting records which disclose with reasonable accuracy at any time the financial position of the funds held on trust and to enable them to ensure that the accounts comply with requirements in the Charities Act 2011 and those outlined in the directions issued by the Secretary of State;
- b. Establishing and monitoring a system of internal control; and
- c. Establishing arrangements for the prevention and detection of fraud and corruption.

The trustees are required under the Charities Act 2011 and the National Health Service Act 1977 to prepare accounts for each financial year. The Secretary of State, with the approval of the Treasury, directs that these accounts give a true and fair view of the financial position of the funds held on trust, in accordance with the Charities Act 2011. In preparing those accounts, the trustees are required to:

- a. Apply on a consistent basis accounting policies laid down by the Secretary of State with the approval of the Treasury;
- b. Make judgements and estimates which are reasonable and prudent;
- c. State whether applicable accounting standards have been followed, subject to any material departures disclosed and explained in the accounts.

The trustees confirm that they have met the responsibilities set out above and complied with the requirements for preparing the accounts. The financial statements set out on pages 5 and 6 attached have been compiled from and are in accordance with the financial records maintained by the trustees.

By Order of the Trustees

Signed:

Chair

A handwritten signature in blue ink, appearing to read 'Steve Field', with a horizontal line underneath.

Trustee

Independent Examiner's Report to the Trustees of Walsall Healthcare NHS Trust General Charitable Fund

I report on the financial statements of Walsall Healthcare NHS Trust General Charitable Fund for the year ended 31 March 2022, which are set out on pages 1 to 8.

Respective responsibilities of trustees and examiner

The charity's trustees are responsible for the preparation of the financial statements. The charity's trustees consider that an audit is not required for this year under section 144(2) of the Charities Act 2011 (the 2011 Act) and that an independent examination is needed.

It is my responsibility to:

- examine the financial statements under section 145 of the 2011 Act;
- follow the procedures laid down in the general Directions given by the Charity Commission under section 145(5)(b) of the 2011 Act; and
- state whether particular matters have come to my attention.

This report, including my statement, has been prepared for and only for the charity's trustees as a body. My work has been undertaken so that I might state to the charity's trustees those matters I am required to state to them in an independent examiner's report and for no other purpose. To the fullest extent permitted by law, I do not accept or assume responsibility to anyone other than the charity and the charity's trustees as a body for my examination work, for this report, or for the statements I have made.

Basis of independent examiner's report

My examination was carried out in accordance with the general Directions given by the Charity Commission. An examination includes a review of the accounting records kept by the charity and a comparison of the financial statements presented with those records. It also includes consideration of any unusual items or disclosures in the financial statements, and seeking explanations from you as trustees concerning any such matters. The procedures undertaken do not provide all the evidence that would be required in an audit and consequently no opinion is given as to whether the financial statements present a 'true and fair view' and the report is limited to those matters set out in the statement below.

Independent examiner's statement

In connection with my examination, which is complete, no matters have come to my attention which give me reasonable cause to believe that in any material respect:

- accounting records were not kept in respect of Walsall Healthcare NHS Trust General Charitable Fund in accordance with section 130 of the 2011 Act; or
- the financial statements do not accord with those records; or

- the financial statements do not comply with the applicable requirements concerning the form and content of financial statements set out in the Charities (Accounts and Reports) Regulations 2008 other than any requirement that the financial statements give a 'true and fair' view which is not a matter considered as part of an independent examination.

I have no concerns and have come across no other matters in connection with the examination to which, in my opinion, attention should be drawn in order to enable a proper understanding of the financial statements to be reached.



Mark Surridge FCCA
For and on behalf of Mazars LLP
First Floor
2 Chamberlain Square
Birmingham
B3 3AX

Date: Jan 23, 2023



WALSALL HEALTHCARE NHS TRUST

**FUNDS HELD ON TRUST
ANNUAL ACCOUNTS 2021-22**

FOREWORD

These accounts have been prepared by the Trustees under section 98(2) of the National Health Service Act 1977 (as amended 2006) in the forms which the Secretary of State has, with the approval of Treasury, directed.

STATUTORY BACKGROUND

The Trustees have been appointed under s11 of the NHS and Community Care Act 1990.

The Walsall Healthcare NHS Trust General Charitable Funds held on trust are registered with the Charity Commission and include funds in respect of the Manor Hospital.

MAIN PURPOSE OF THE FUNDS HELD ON TRUST

The main purpose of the charitable funds held on trust is to apply income for any charitable purpose relating to the National Health Service wholly or mainly for the services provided by the Walsall Healthcare NHS Trust.

Statement of Financial Activities for the year ended 31 March 2022

	Notes	Unrestricted Funds £000	Restricted Funds £000	Endowment Funds £000	2021-22 Total Funds £000	2020-21 Total Funds £000
Income and Endowments from:						
Donations and legacies		150	122	0	272	430
Other trading activities	2.1	3	0	0	3	7
Investment income	7.3	13	6	0	19	6
Other		0	0	0	0	-
Total		166	128	0	294	443
Expenditure on:						
Raising funds	4.1	22	10	0	32	5
Charitable Activities	4.2	43	93	0	136	134
Total		65	103	0	168	139
Net income/(expenditure)		101	25	0	126	304
Transfer between funds		0	0	0	0	0
Other recognised gains/(losses):						
Gains/(losses) on revaluation and disposal of investment assets		(11)	(5)	0	(16)	256
Net movement in funds	5	90	20	0	110	560
Reconciliation of funds:						
Fund balances brought forward at 31 March 2021		556	374	0	930	370
Total fund balances carried forward at 31 March 2022		646	394	0	1,040	930

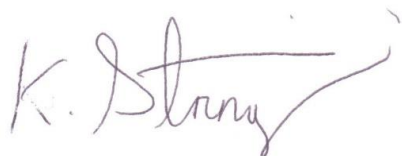
All activities relate to continuing operations.

The notes at pages 3 to 8 form part of this account.

Balance Sheet as at 31 March 2022

	Notes	Total at 31 March 2022 £000	Total at 31 March 2021 £000
Fixed assets:			
Investments	7.1	699	631
Total fixed assets		699	631
Current assets:			
Debtors	8	53	3
Investments	7.2	63	142
Cash at bank and in hand		408	300
Total current assets		524	445
Liabilities:			
Creditors: Amounts falling due within one year	9	(183)	(146)
Net current(liabilities)		341	299
Total assetslesscurrent liabilities		1,040	930
Total net assets		1,040	930
The funds of the charity:			
Restricted income funds	10	394	374
Unrestricted funds	10.1	646	556
Total unrestricted funds		646	556
Total charity funds		1,040	930

The notes at pages 3 to 8 form part of this account.



Signed:

Date: 23.01.2023

NOTES TO THE ACCOUNTS

1. Accounting Policies

1.1 Accounting Convention

The principal accounting policies adopted, judgements and key sources of estimation uncertainty in the preparation of the financial statements are as follows:

a) Basis of preparation

The financial statements have been prepared in accordance with Accounting and Reporting by Charities: Statement of Recommended Practice applicable to charities preparing their accounts in accordance with the Financial Reporting Standard applicable in the UK and Republic of Ireland (FRS102) - (Charities SORP (FRS102)), Section 1A of the Financial Reporting Standard applicable in the UK and Republic of Ireland (FRS102) and the Companies Act 2006. There were no material changes as a result of transition to the Charities SORP 2019 and the updated FRS 102 from 1 April 2019.

b) Preparation of the accounts on a going concern basis

These accounts have been prepared on a going concern basis. The trustees have been regularly updated on the financial activities of the charity during the financial year and are not aware of any material uncertainties that will affect the charity continuing in operational existence for the foreseeable future. For this reason the trustees continue to adopt the going concern basis in preparing the accounts.

The economic uncertainty created by Brexit, and the recent global pandemic (COVID-19) resulted in a significant loss in value of investments during 2019/20 many of which dropped below their original investment cost. The 2021/22 financial year continued the recovery in investments following a change in Management of the Charity's portfolio.

The net assets of the Charity at the time of reporting are more than sufficient to cover the average of 6 months spend. There is an expectation of a continued upturn in the valuation of the funds as the markets recover and alternative investments are purchased. Donations from individuals were substantially lower during 2021/22, however the Charity benefitted substantially from "Captain Tom" donations and is continuing to expand its network of possible income streams to further sustain the long-term viability of the Charity. The Trust is due to receive a significant legacy during 2022/23 from the proceeds of a property sale.

1.2 Income Recognition

a. Income is recognised in the Statement of Financial Activities when the following three factors are met:

- i. Entitlement - arises when a particular resource is receivable or the charity's right becomes legally enforceable;
- ii. Probable - when there is a reasonable certainty that the incoming resources will be received; and
- iii. Measurement - when the monetary value of the income and related transaction costs can be measured with sufficient reliability.

b. Gifts in kind:

- i. Assets given for distribution by the funds are included in the Statement of Financial Activities only when distributed.
- ii. Assets given for use by the funds (e.g. property for its own occupation) are included in the Statement of Financial Activities as incoming resources when receivable.
- iii. Gifts made in kind but on trust for conversion into cash and subsequent application by the funds are included in the accounting period in which the gift is sold.

In all cases the amount at which gifts in kind are brought into account is either a reasonable estimate of their value to the funds or the amount actually realised. The basis of the valuation is disclosed in the annual report.

c. Intangible income

Intangible income (e.g. the provision of free accommodation) is included in the accounts with an equivalent amount in outgoing resources, if there is a financial cost borne by another party. The value placed on such income is the financial cost of the third party providing the resources.

d. Legacies

Legacies are accounted for as incoming resources once the receipt of the legacy becomes reasonably certain. This will be once confirmation has been received from the representatives of the estates that payment of the legacy will be made or property transferred and once all conditions attached to the legacy have been fulfilled.

1.3 Expenditure

The funds held on trust accounts are prepared in accordance with the accruals concept. All expenditure and the related liability is recognised once there is a legal or constructive obligation to make a payment to a third party.

a. Cost of raising funds

The cost of generating funds are the costs associated with generating income for the funds held on trust.

b. Grants payable

Grants payable are payments, made to third parties (including NHS bodies) in the furtherance of the funds held on trust's charitable objectives to relieve those who are sick. They are accounted for on an accruals basis where the conditions for their payment have been met or where a third party has a reasonable expectation that they will receive the grant. This includes grants paid to NHS Bodies.

c. Governance costs

These are accounted for on an accruals basis and are recharges of appropriate proportions of the costs from Walsall Healthcare NHS Trust.

UNAUDITED - CHARITABLE TRUST ACCOUNTS - WALSALL HEALTHCARE NHS TRUST - 2021/22

1.4 Structure of funds

Where there is a legal restriction on the purpose to which a fund may be used, the fund is classified in the accounts as a restricted fund. Funds where the capital is held to generate income for charitable purposes and cannot itself be spent are accounted for as endowment funds. Other funds are classified as unrestricted funds. Funds which are not legally restricted but which the Trustees have chosen to earmark for set purposes are classified funds. The major funds held within these categories are disclosed in note 1.10.

1.5 Investment Fixed Assets

Investment fixed assets are shown at market value.

- a. Quoted stocks and shares are included in the balance sheet at mid-market price, ex-div.
- b. Other investment fixed assets are included at trustees' best estimate of market value.

1.6 Realised gains and losses

All gains and losses are taken to the Statement of Financial Activities as they arise. Realised gains and losses on investments are calculated as the difference between sales proceeds and opening market value (or date of purchase if later). Unrealised gains and losses are calculated as the difference between market value at the year end and opening market value (or date of purchase if later).

1.7 Pensions Contributions

The charity does not directly employ individuals, however the costs of the fundraiser have been recharged and therefore pension contributions are indirectly paid by way of this salary recharge.

1.8 Trustees

All new trustees are required to follow an induction programme approved by the Board and they, as well as existing board members, can access external training courses, seminars and workshops.

1.9 Prior Year Adjustments

There has been no change to the accounts of prior years.

1.10 Pooling Scheme

An official pooling scheme is operated for investments relating to the following funds:

Corporate including General and Education Funds
Medical Specialties Fund
Surgical Specialties Fund
Women's, Children's and Community Services Fund
Specialist Palliative Care

These are further sub-divided into individual funds totalling more than 40 funds relating more specifically to donor wishes.

The Scheme was registered with the Charity Commission on 17 March 1998.

1.11 Statement of cash flow exemption

A statement of Cash Flows has not been produced as the charity is within the small charity thresholds.

1.12 Financial instruments

The Charity only has financial assets and financial liabilities of a kind that qualify as basic financial instruments. Basic financial instruments are initially recognised at transaction value and subsequently measured at their settlement value.

1.13 Judgments in applying accounting policies and key sources of estimation uncertainty

The charity makes estimates and assumptions concerning the future. The estimates and assumptions have no material impact on the carrying amounts of assets and liabilities within the accounts.

UNAUDITED - CHARITABLE TRUST ACCOUNTS - WALSALL HEALTHCARE NHS TRUST - 2021/22

2.1 Details of Other income

During the financial year £3,241 was received in relation to the Staff Lottery which was the initiative of Well Wishers (associated trading name of Walsall Healthcare NHS Trust General Charitable Fund).

2.2 Material Grants received by category

A second grant was received by way of a successful Black Country and West Birmingham STP national bid for £50,000 during the year. The grant will support a nominated "Wellbeing project" when the details have been finalised and agreed by the Charity Committee.

3.1 Details of resources expended - grants

There were no material grants paid during the year.

3.2 Grants made to institutions

No grants were made to institutions during the year.

3.3 Grants paid to individuals

No grants were paid to individuals during the year.

4 Details of Expenditure

4.1 Analysis of Raising Funds Costs

	Unrestricted Funds	Restricted Funds	Endowment Funds	Total 2022 Funds	Total 2021 Funds
	£000	£000	£000	£000	£000
Fundraising Costs	19	9	0	28	0
Investment managers fee	3	1	0	4	5
	<u>22</u>	<u>10</u>	<u>0</u>	<u>32</u>	<u>5</u>

The Charity does not directly employ staff. Included in the above Fundraising Costs is a recharge of fundraising salary costs totalling £26,606.

4.2 Details of Expenditure - Charitable Activities

	Funds	Restricted Funds	Endowment Funds	Total 2022 Funds	Total 2021 Funds
	£000	£000	£000	£000	£000
Other:					
Patients welfare and amenities	16	77	0	93	66
Staff welfare and amenities	12	9	0	21	62
Miscellaneous	1	0	0	1	4
	<u>29</u>	<u>86</u>	<u>0</u>	<u>115</u>	<u>132</u>

Analysis of Support & Governance Costs included within Charitable Activities

	Unrestricted Funds	Restricted Funds	Endowment Funds	Total 2022 Funds	Total 2021 Funds
	£000	£000	£000	£000	£000
Management	1	1	0	2	0
Finance Administration	10	5	0	15	0
Finance Administration Software	1	0	0	1	1
Audit fee	2	1	0	3	1
	<u>14</u>	<u>7</u>	<u>0</u>	<u>21</u>	<u>2</u>

Walsall Healthcare NHS Trust reinstated the recharge of administration costs in 2022/23 following the agreement in 2020/21 to waive the administration recharge in light of the impact of the COVID-19 Pandemic.

5 Changes in Resources Available for Charity Use

	Unrestricted Funds	Restricted Funds	Endowment Funds	Total 2022 Funds	Total 2021 Funds
	£000	£000	£000	£000	£000
Net movement in funds	<u>90</u>	<u>20</u>	<u>0</u>	<u>110</u>	<u>560</u>

UNAUDITED - CHARITABLE TRUST ACCOUNTS - WALSALL HEALTHCARE NHS TRUST - 2021/22

6 Fixed Assets

The charity does not hold any tangible fixed assets.

7 Analysis of Fixed Investment Assets

7.1 Fixed Asset Investments

	Total 2022 £000	Total 2021 £000
Market value at 31 March 2021	631	455
Less: Disposals at carrying value	(623)	(359)
Add: Acquisitions at cost	707	279
Net gain / (loss) on revaluation	(16)	256
Market value at 31 March 2022	699	631
Historic cost at 31 March 2022	732	760

	31 March 2022 £000	31 March 2021 £000
Fixed Interest	99	36
UK Equities & Funds	158	504
Overseas Equities and Funds	355	91
Other Investments	87	0
	699	631

At 31 March 2022 the majority of the holdings were valued below 5% of the total value of the investment portfolio.

Investment	MARKET VALUE	%
ADMIRAL GROUP ORD	£11,790	1.69%
ARTEMIS INV FDS IC ARTEMIS US	£23,444	3.35%
BAILLIE GIFF OSEAS BG AMERICAN	£25,776	3.69%
BLACKROCK CON EURP BR CONTL EURPN	£26,263	3.76%
BLACKROCK EMG MKTS BR EMERGING MARKETS	£12,128	1.73%
BNY MELLON INV FDS BNY MLN ASIAN	£26,334	3.77%
CRODA INTL ORD	£13,711	1.96%
DODGE & COX WIDE U S STOCK	£42,159	6.03%
EXPERIAN ORD	£13,929	1.99%
FIDELITY UCITS ICA US	£42,196	6.04%
GLAXOSMITH KLINE	£33,521	4.79%
JANUS HEND FXD INT JH FXD INT	£24,624	3.52%
JUPITER INV MGT S1 JUPITER UK	£18,200	2.60%
JUPITER STRAT BOND JUPITER STRAT BOND X	£24,959	3.57%
JUPITER JPN INC FD JUPITER JPN	£24,385	3.49%
KONE OYJ SER'B'NPV	£11,762	1.68%
LEGAL & GENERAL GP ORD	£15,452	2.21%
MORGAN STANLEY IF ASIA OPPORTUNITY	£21,309	3.05%
MUZINICH FUNDS MZNCH GBL TCTL CRED	£18,863	2.70%
NATIONAL GRID ORD	£19,943	2.85%
NINETY ONE FD SER DIVSFD	£19,476	2.79%
OCTOPUS RENEWABLES ORD	£20,156	2.88%
PIMCO SEL FDS PLC UK INCOME BOND	£25,006	3.58%
PREMIER MITON INV3 PREM MITON EURP	£22,983	3.29%
RELX PLC	£17,062	2.44%
SCHRODER GBL CITIE GBL CITIES	£16,026	2.29%
SMITH & NEPHEW ORD	£14,530	2.08%
TWENTYFOUR GBL INV CORPORATE BOND	£24,714	3.53%
VANGUARD INV FDS VANGUARD US	£88,479	12.65%
Total	£699,180	100.00%

7.2

	Held in UK £000	Held outside UK £000	2021-22 Total £000	2020-21 Total £000
Cash held as part of investment portfolio	63	0	63	142
	63	0	63	142

7.3 Total investment income

	Held in UK £000	Held outside UK £000	2021-22 Total £000	2020-21 Total £000
Investments listed on Stock Exchange	19	0	19	6
	19	0	19	6

UNAUDITED - CHARITABLE TRUST ACCOUNTS - WALSALL HEALTHCARE NHS TRUST - 2021/22

8 Analysis of Debtors

Accrued income

31 March 2022 £000	31 March 2021 £000
53	3

9 Analysis of Creditors

Trade creditors
Accruals

31 March 2022 £000	31 March 2021 £000
174	137
10	9
184	146

10 Details of Restricted Funds

Donations of £66,474 were received for Specialist Palliative Care services, and a national grant for £50,000 were included within the total of £122,870 for 2021/22.

At 31 March 2022 the restricted funds balances and movements detailed in the table below totalled £394,000.

	Balance B/fwd as at 1 April 2021 £000	Donations & Investment Income £000	Expenditure £000	Gains/losses £000	Balance C/fwd as at 31 March 2022 £000
Restricted Fund Description					
League Of Friends	7	0	0	0	7
Boxing Match	1	0	0	0	1
Children's Ward Appeal	0	0	0	0	0
Coronavirus Donations	37	1	(2)	(1)	35
Nhs Charities	155	3	(22)	(2)	134
Fun Run	1	0	0	0	1
London Marathon	0	5	0	0	5
Charity Quiz	0	0	0	0	0
Medical Equipment	14	0	(1)	0	13
Heartstart	15	0	(1)	(1)	13
Theatres Ent	4	0	0	0	4
Ward 11	2	0	0	0	2
Ward 10	0	0	0	0	0
Wrighton - Orthopaedic Dept	10	0	0	0	10
Vascular Fund	0	0	0	0	0
Urology Fund	4	0	0	0	4
Neo-Natal Unit(Sebu)	2	0	0	0	2
Specialist Palliative Care	61	68	(26)	(1)	102
Sandwell Grant	50	50	(51)	0	49
Climb Snowdon	2	0	0	0	2
Fundraising 2018 Stroke Rehab	7	0	0	0	7
Trust's Got Talent Fundraising	0	1	0	0	1
Make A Will Week	0	0	0	0	0
Wren Appeal	2	0	0	0	2
Total	374	128	(103)	(5)	394

10.1 Details of Material Funds- Designated Funds

Name of fund	Description of the nature and purpose of each fund
Corporate including General and Education Funds	} For any charitable purpose relating to the National Health Service wholly or mainly for the benefit of the named specialty/activity of the Walsall Hospitals NHS Trust.
Medical Specialties	
Surgical Specialties	
Women's, Children's and Community Services Fund	
Specialist Palliative Care	

10.2 Details of Endowment Funds

The Charitable fund has not received any endowments during the year. The funds of the Charity do not contain any endowments.

11 Contingencies

Walsall Healthcare NHS Trust is the residual beneficiary of an estate that is currently being executed. At the date of signing the accounts funds have not yet been received by the Trust.

UNAUDITED - CHARITABLE TRUST ACCOUNTS - WALSALL HEALTHCARE NHS TRUST - 2021/22

12 Commitments, Liabilities and Provisions

Commitments

The Trust has the following commitments:

Commitments outstanding at the beginning of the year

Commitments in year

Amount charged to the SOFA in year

Amounts released during the year due to a change in the value of the commitment

Amount of commitments outstanding at the end of the year

Amount payable within one year

Amount payable in more than one year

2022
£000
135
23
(6)
(2)
150
150

The value of commitments at the end of the year are not included within the balance sheet and reflect the Charity's intention to purchase equipment in the forthcoming year.

The Charity has the following commitments for the forthcoming year :

<input type="checkbox"/> Chapel Refurbishment	50,000
<input type="checkbox"/> Fundraising hub	49,500
<input type="checkbox"/> Scholarship Contribution	10,000

12.1 Liabilities and Provisions

The trustees recognise liabilities in the accounts once they have incurred either a legal or constructive obligation to expend funds. The trustees do not consider there to be any provisions which need to be included in these accounts.

13 Trustee and Connected Persons Transactions

No expenditure has been incurred in respect of trustees or connected persons during the year.

Trustee indemnity insurance cover and insurance premium cost is £nil.

14 Loans or Guarantees

The Charity does not hold any assets against which a loan or guarantee has been secured.

15 Related Party

During the year none of the trustees or members of the key management staff or parties related to them has undertaken any material transactions with the Walsall Healthcare NHS Trust General Charitable Fund. However, the charity has made revenue and capital payments to Walsall Healthcare NHS Trust.

Walsall Healthcare NHS Trust is a related party of Walsall Healthcare NHS Trust General Charitable Fund. Approximately 68% of the expenditure transactions totalling £168,000 processed within the year benefitted the patients and staff of the hospital. Transactionally payments are made via Walsall Healthcare NHS Trust and reimbursed by the Charity.

16 Post Balance Sheet Event

The impact of COVID-19 during the latter part of 2019/20 significantly impaired the level of income received by the Charity which has extended beyond 2020/21 and continued in 2021/22. The Trustees have taken this into account in their reviews in the budget and forecast for 2022/23. The Charity is due to receive a significant legacy during the 2022/23 financial year and the appointment of additional fundraising support in the medium term is expected to

Meet the Trustees

The Trust Board acts as Corporate Trustee, and its membership is as set out below. The Trustees are accountable to the Charity Commission for those funds deemed to be charitable as well as to the Secretary of State for Health and Social Care.

The Trustees have established the Charitable Funds Committee, whose role is to advise the Trust on the appropriate receipt, use and security of charitable monies.

The Charitable Funds Committee terms of reference provide that the Committee will:

- (a)** Ensure funds which have been donated and bequeathed to the Walsall Healthcare NHS Trust General Charitable Funds are effectively managed in accordance with its Declaration of Trust and Charity Commission regulations
- (b)** Determine an investment strategy and arrangements for the investment of funds which are not immediately required for use.
- (c)** Assurance to the Board of Trustees that charitable funds are accounted for, deployed and invested in line with legal and statutory requirements.
- (d)** Considering and approving the annual accounts for charitable funds for submission to the Board of Trustees.



Paul Assinder
Non-Executive Director



Sally Evans
*Group Director of
Communications and
Stakeholder Engagement*



Russell Caldicott
Chief Financial Officer



Jenna Davies
*Director of Corporate
Governance & Trust Secretary
(until June meeting)*



Ann-Marie Riley
*Director of Nursing
(until June meeting)*



Glenda Augustine
*Director of Planning and
Improvement
(until June meeting)*



Kevin Bostock
*Group Director of
Assurance*

